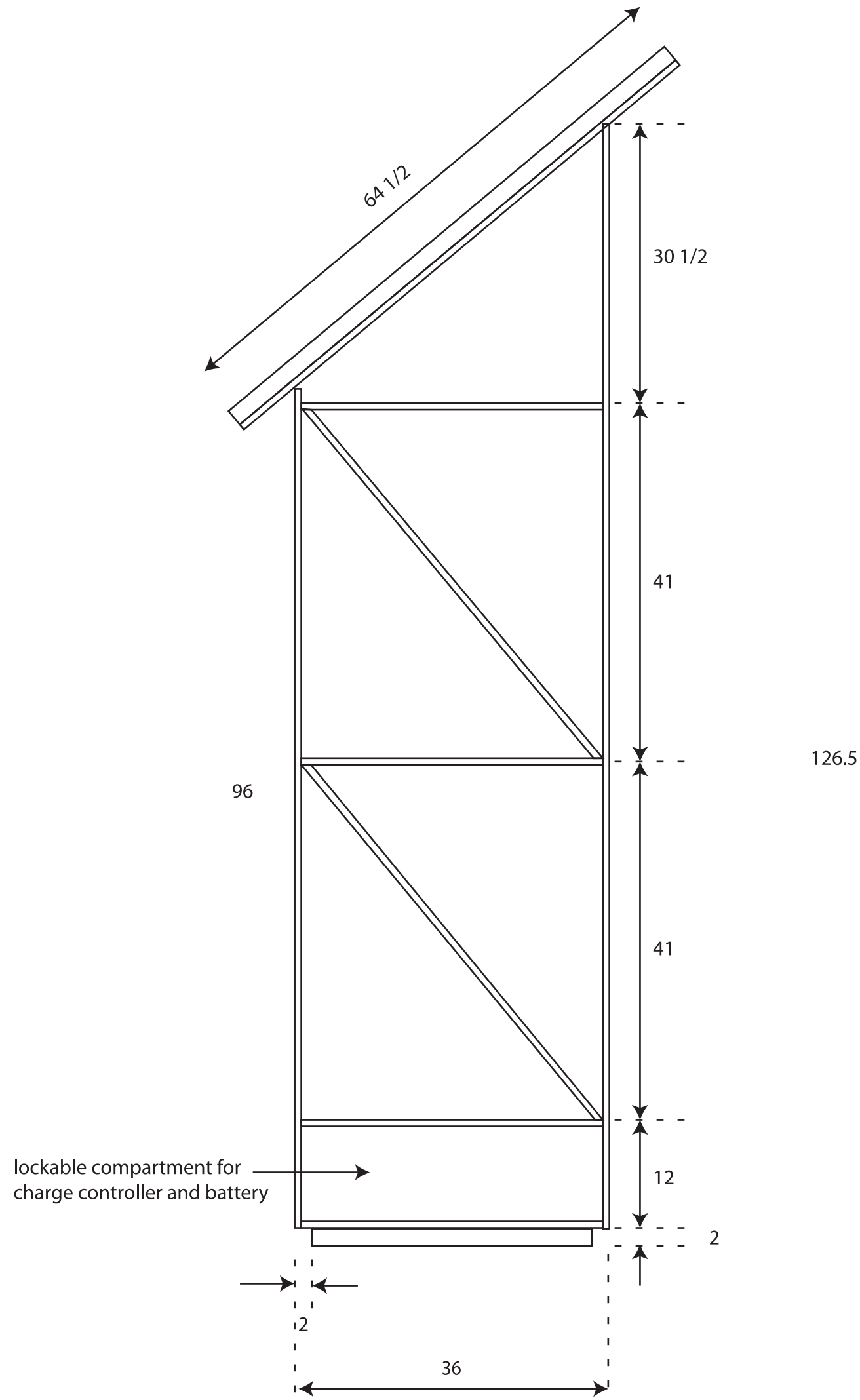
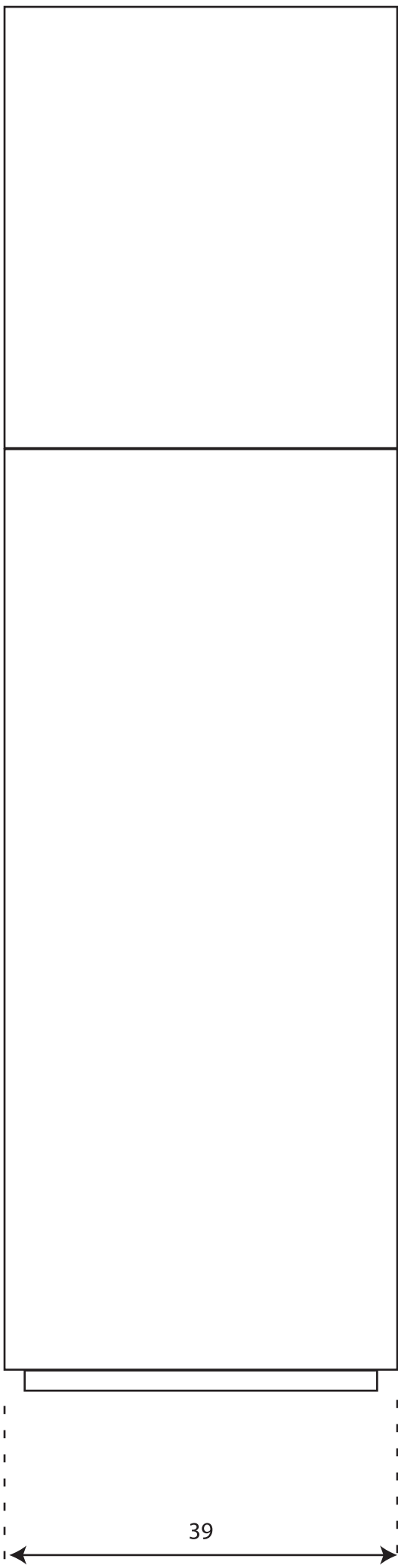


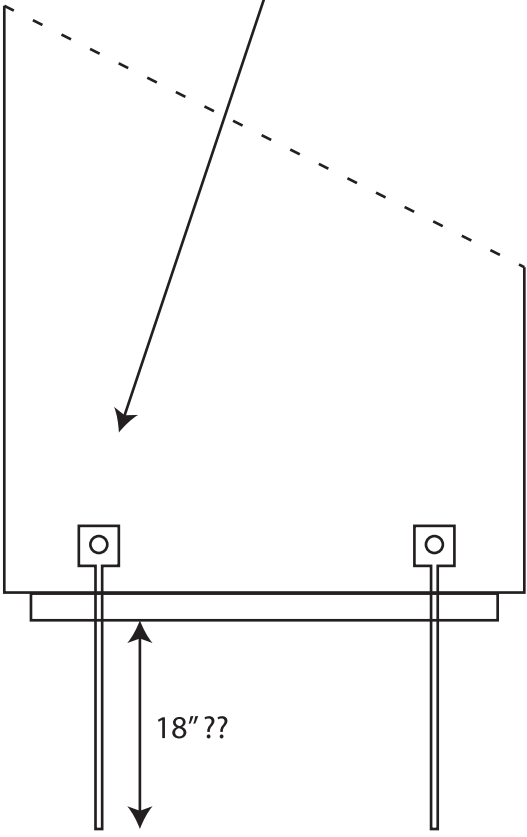
solar tower sideview:



solar tower frontview:

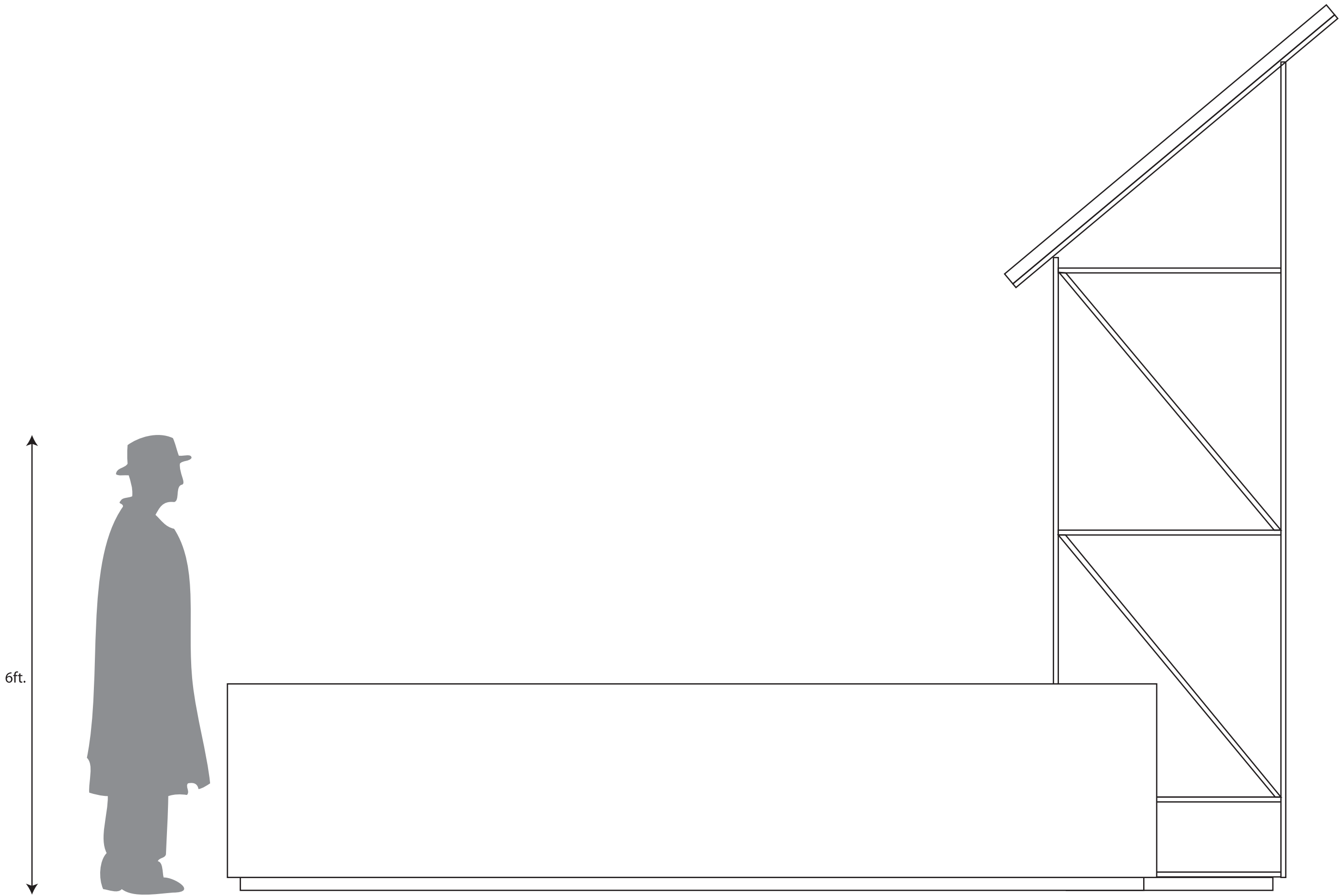


We used rebar bolted to the bottom of the tower to secure the structure at the site in Germany (there the ground underneath the tower was cobblestone). The length of the rebar in the ground was approx. 18"

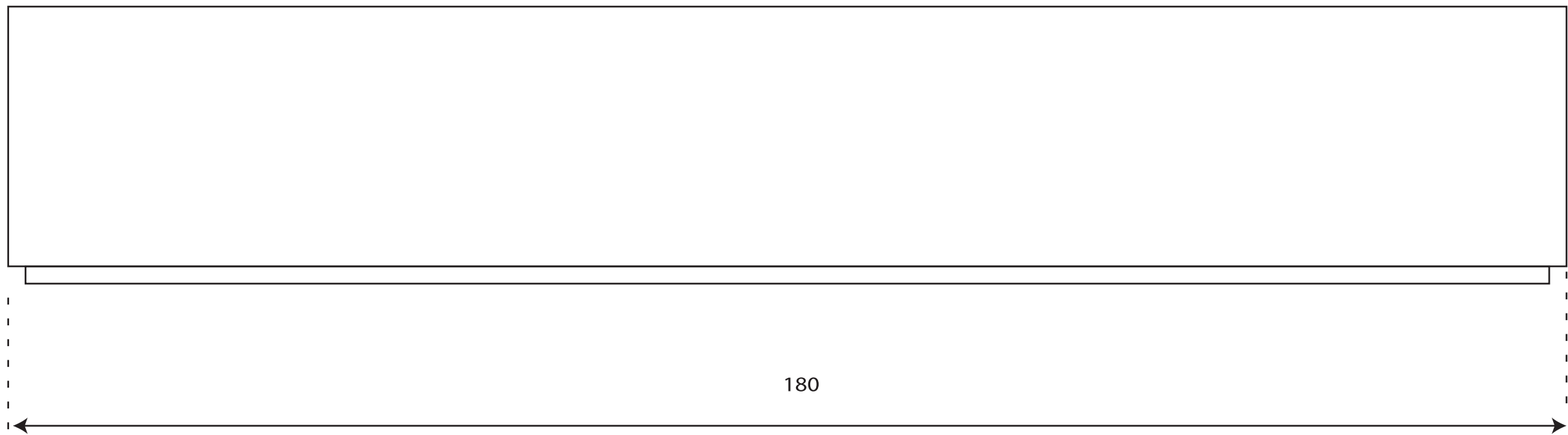


We would like to hear about suggestions how to secure the structure at Purdue (surface: lawn) - the above sketch proposes two rebar rods per side bolted to the structure - going 18" into the ground.

sideview, planter box and tower together:



planter box sideview:



planter box frontview:

